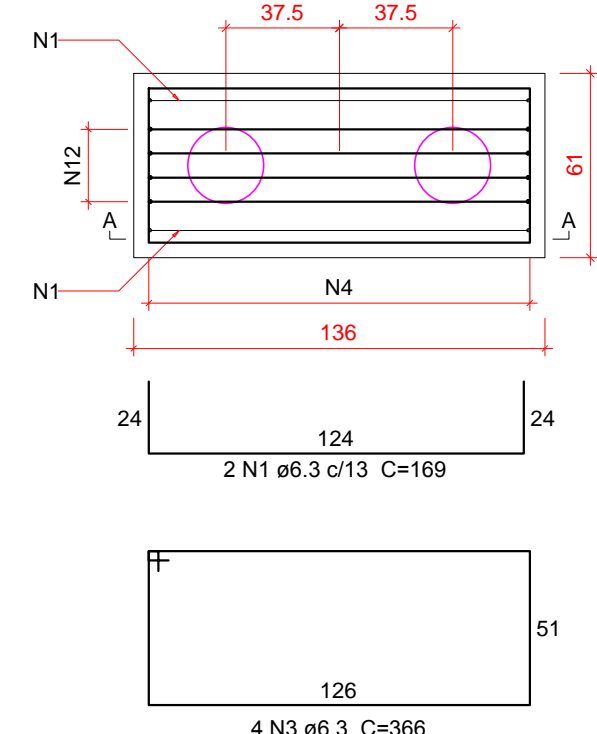
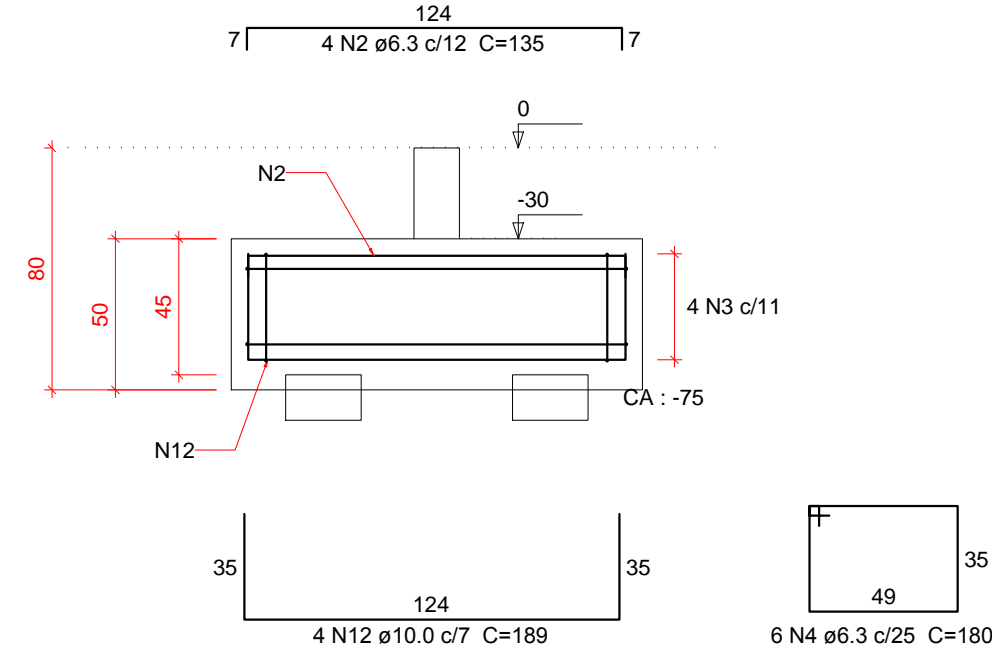


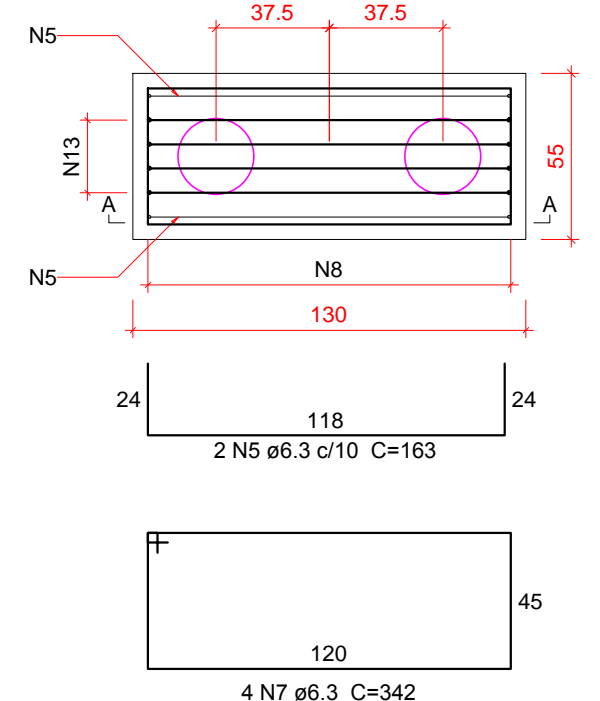
B34
2xC25
PLANTA
ESC 1:25



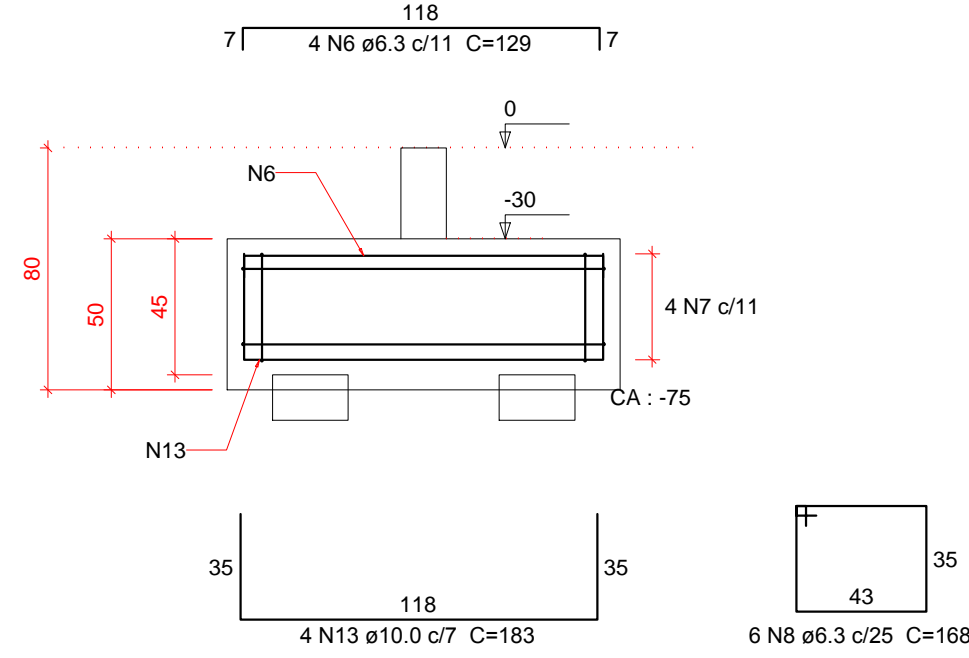
CORTE A-A
ESC 1:25



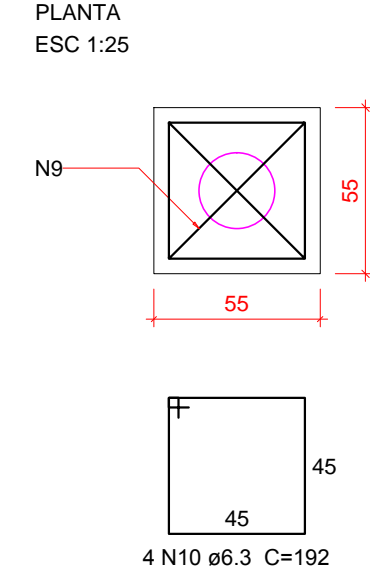
B12=B13=B15=B17=B21=B23=B26=B28=B29=B30
=B32=B36
2xC25
PLANTA
ESC 1:25



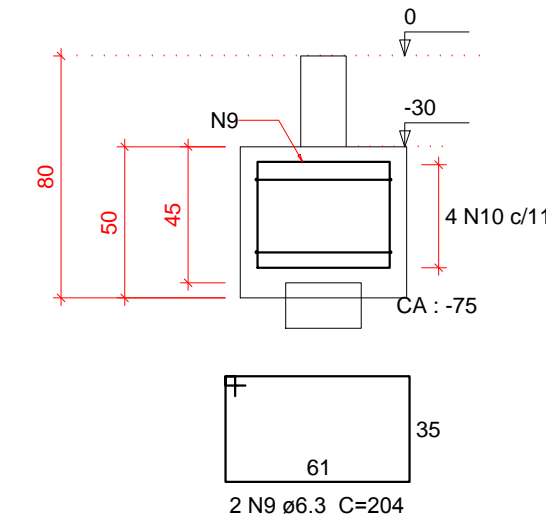
CORTE A-A
ESC 1:25



B1=B2=B5=B6=B8=B14=B18=B20
=B24=B25=B31
1xC25
PLANTA
ESC 1:25



CORTE
ESC 1:25



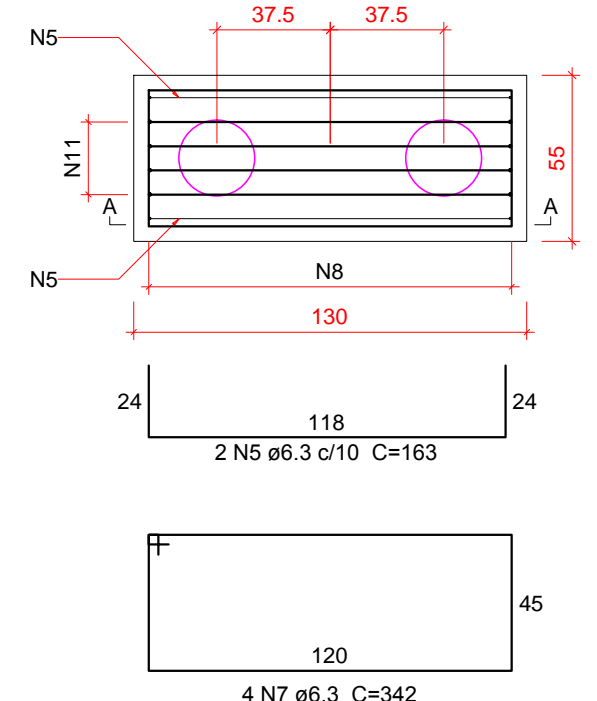
Relação do aço
2xB4
B37
14xB31
12xB36

AÇO	N	DIAM (mm)	QUANT	C.UNIT (cm)	C.TOTAL (cm)
CA50	1	6.3	9	169	676
	2	6.3	16	135	1080
	3	6.3	16	366	2928
	4	6.3	24	180	2160
	5	6.3	28	163	4564
	6	6.3	56	129	7224
	7	6.3	56	342	19152
	8	6.3	84	168	14112
	9	6.3	24	204	6120
	10	6.3	48	192	11520
	11	8.0	8	184	1472
	12	10.0	16	189	1512
	13	10.0	48	183	8784

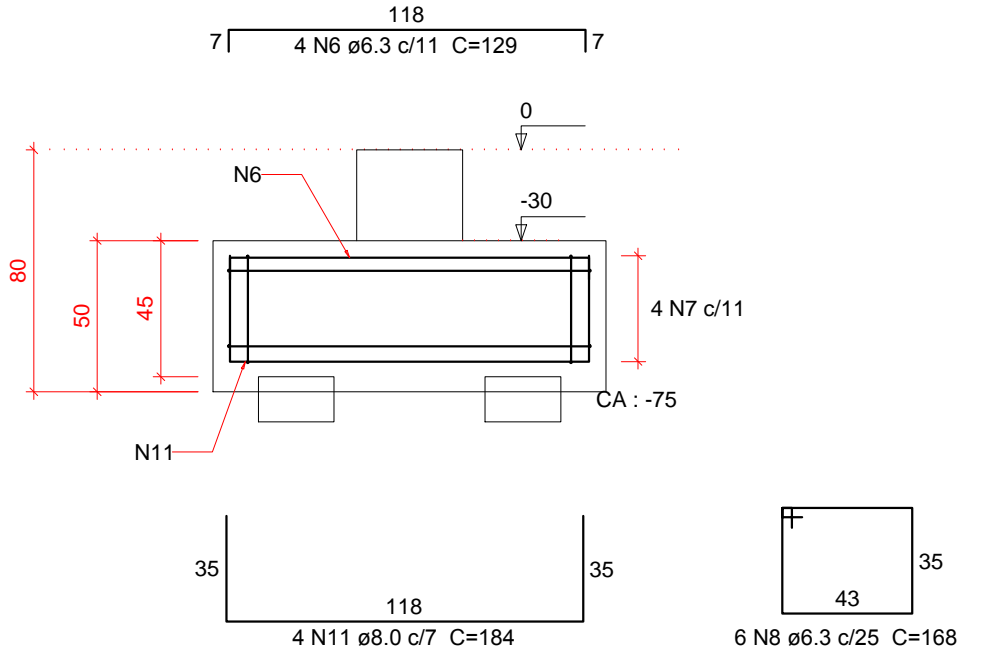
AÇO	DIAM (mm)	C.TOTAL (m)	QUANT + 10 % (Barras)	PESO + 10 % (kg)
CA50	6.3	649.4	60	174.8
	8.0	14.8	2	6.4
	10.0	95.4	9	64.7
PESO TOTAL (kg)				
CA50	245.9			

Volume de concreto (C-30) = 7.43 m³
Área de forma = 43.27 m²

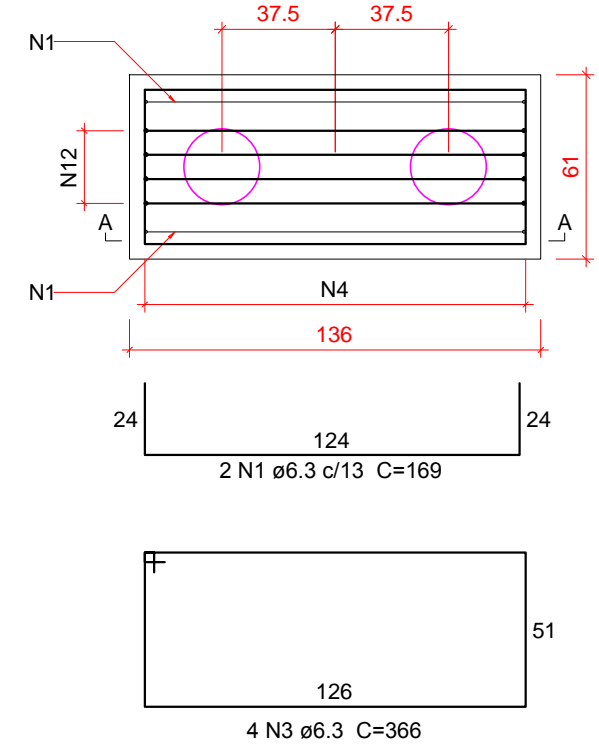
B3-B4
2xC25
PLANTA
ESC 1:25



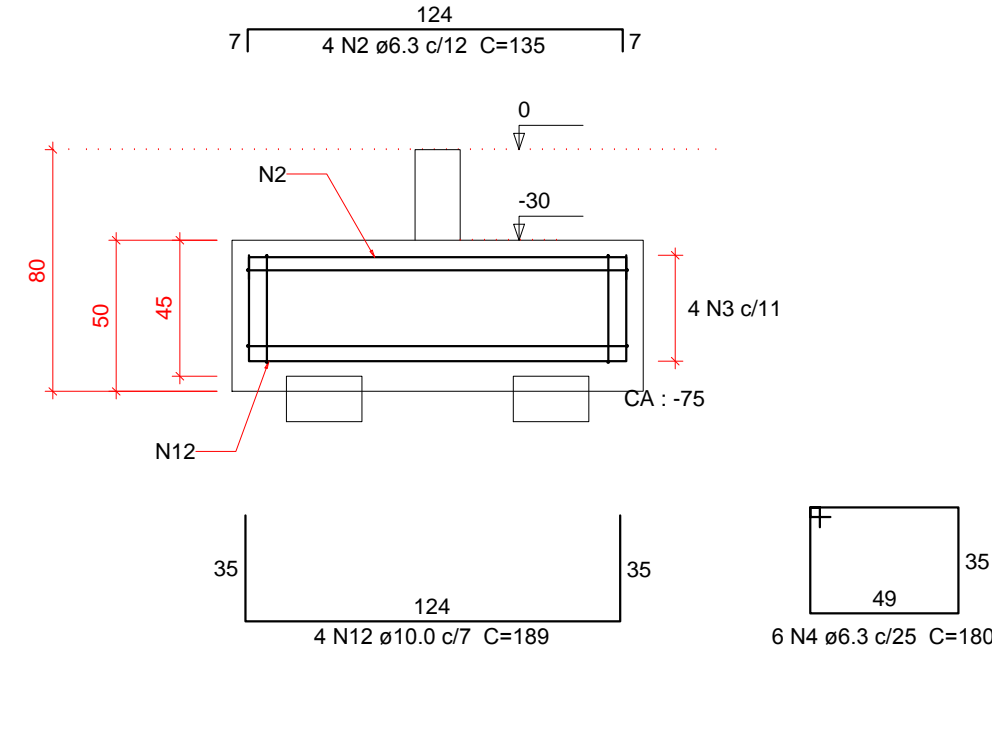
CORTE A-A
ESC 1:25



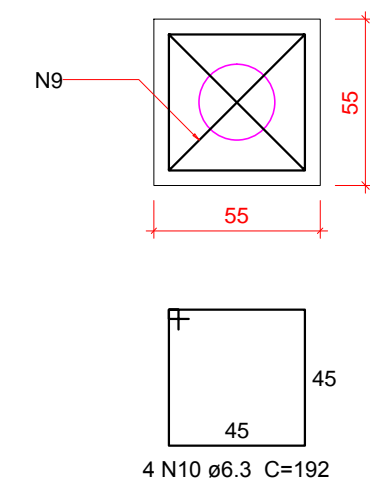
B37
2xC25
PLANTA
ESC 1:25



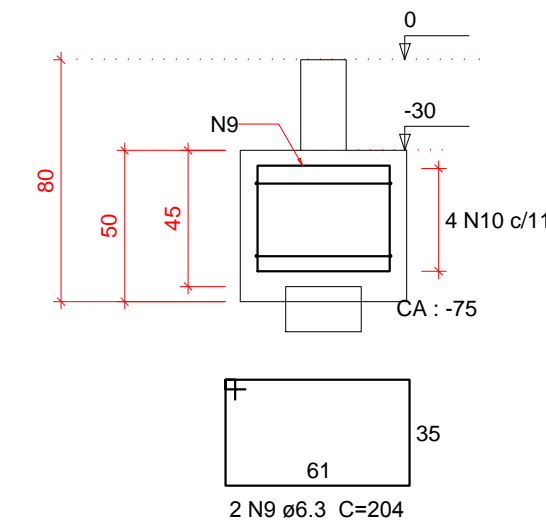
CORTE A-A
ESC 1:25



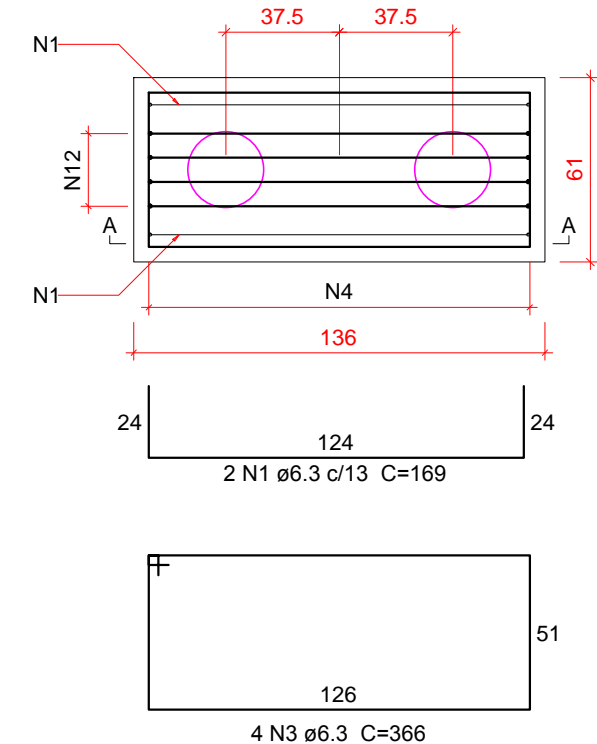
B7
1xC25
PLANTA
ESC 1:25



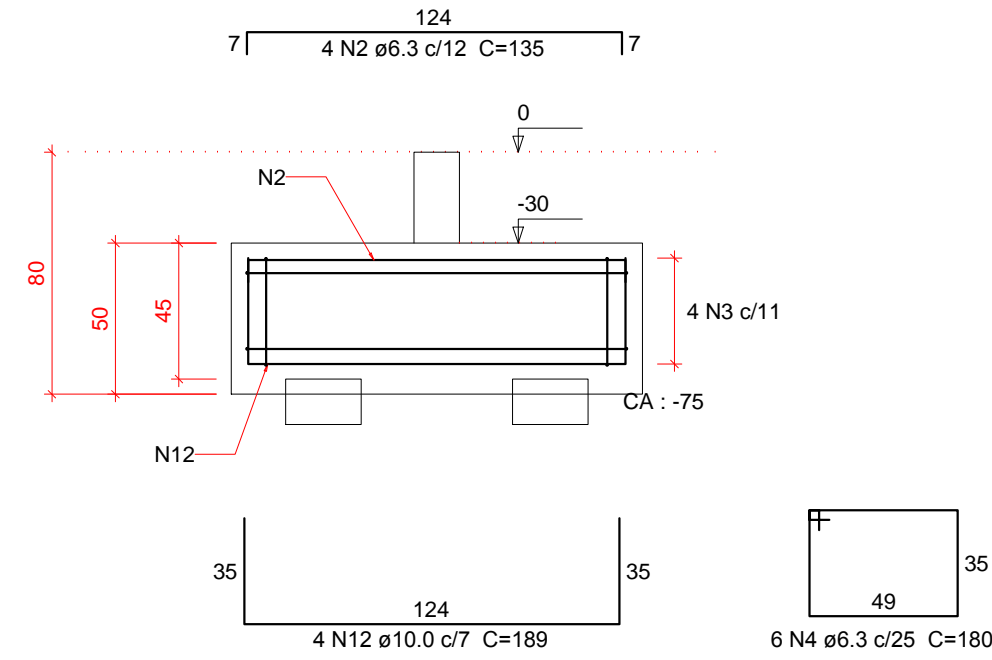
CORTE
ESC 1:25



B10=B11
2xC25
PLANTA
ESC 1:25



CORTE A-A
ESC 1:25



APROVAÇÕES :

A APROVAÇÃO DO PRESENTE PROJETO PELA PREFEITURA, NÃO RECONHECE A PROPRIEDADE DO IMÓVEL

CH **CLEBER LUIS HAHN**
ENGENHEIRO CIVIL - CREA PR 94.816/D

PROJETO ESTRUTURAL
OBRA : **Comercial em Alvenaria**
PRETENDENTE : **ACIM - Associação Comercial e Empresarial de Mercedes**

ENDEREÇO DA OBRA :
Rua Doutor Flores / Lote 07 / Quadra 32 / Centro / Mercedes / PR

REFERÊNCIA :
Armadura dos blocos de fundação

DADOS ESTATÍSTICOS :
VER PROJETO ARQUITETÔNICO

ASSINATURA DO PRETENDENTE :
Associação Comercial e Empresarial de Mercedes
CNPJ : 72.326.620 / 0001 - 88

RESPONSÁVEL PROJETO / DESENHO :
Engº Civil Cleber Luis Hahn
Registro Crea PR - 94.816/D - CPF: 020.404.019-11

RESPONSÁVEL EXECUÇÃO :

DATA : **01 / 2025** PRANCHA : **EST_003**